



Healthier Lives, Our Mission

CARBON FOOTPRINT REPORT 2023

PREPARED BY



Eco Sourcing Hub
REDUCE COSTS, EMISSIONS & RISKS



CONTENTS

03

GENERAL
INFORMATION

06

ORGANISATIONAL
BOUNDARIES

07

REPORTING
BOUNDARIES

13

EXCLUDED
EMISSION
CATEGORIES

14

QUANTIFIED GHG
INVENTORY

15

REPORTED GHG
AND GWP

16

APPROACH TO
EMISSION FACTORS

17

UNCERTAINTY
ASSESSMENT

18

2023 CARBON
EMISSIONS

22

CONTACT US



GENERAL INFORMATION

CuRX Health Ltd is a leading provider of diagnostic and healthcare solutions across the UK, specialising in reducing patient waiting times and delivering fast, accurate diagnoses. With a mission to enhance healthcare efficiency, CurRx collaborates with hospitals, GP surgeries, and commissioners to improve patient experiences, making it an integral part of the UK's healthcare framework. Operating in Greater Manchester, Huddersfield, and Walsall, CuRX Health delivers both NHS and private services, focusing particularly on diagnostic procedures like ultrasound scans.

At the heart of CurRx Health's service is a commitment to patient care, continuous improvement, and operational excellence. The company's values revolve around timely medical interventions, precise reporting, and cost-effectiveness, which are achieved through close partnerships with healthcare providers.

CuRX Health utilises NHS-approved image exchange systems, cloud-based services, and advanced diagnostic tools, ensuring patients receive same-day results and streamlined treatment processes. The company has also broadened its reach by expanding its services to health centres, hospitals, and GP surgeries, thus making healthcare more accessible to a wider population.



GENERAL INFORMATION

The CuRX Health team is composed of experienced healthcare professionals and management experts who work collaboratively to uphold high service standards. Their leadership focuses on continuous improvement through feedback and service refinement. Additionally, the company places strong emphasis on creating a safe and compassionate environment for both patients and staff, an effort that is reflected in its registration with the Care Quality Commission (CQC).

As healthcare continues to intersect with broader societal and environmental issues, CuRX Health recognises that its operational impact extends beyond patient care. The increasing focus on sustainability in healthcare has prompted CurRx to examine its environmental footprint, particularly regarding resource usage and emissions.

In light of these concerns, this report aims to document CurRx Health's greenhouse gas emissions inventory. It marks the beginning of CurRx's efforts to understand and report on its emissions, which is a crucial step towards responsible environmental management. By focusing on areas such as energy consumption, transportation, and other operational activities, this report provides a comprehensive overview of the company's carbon footprint.



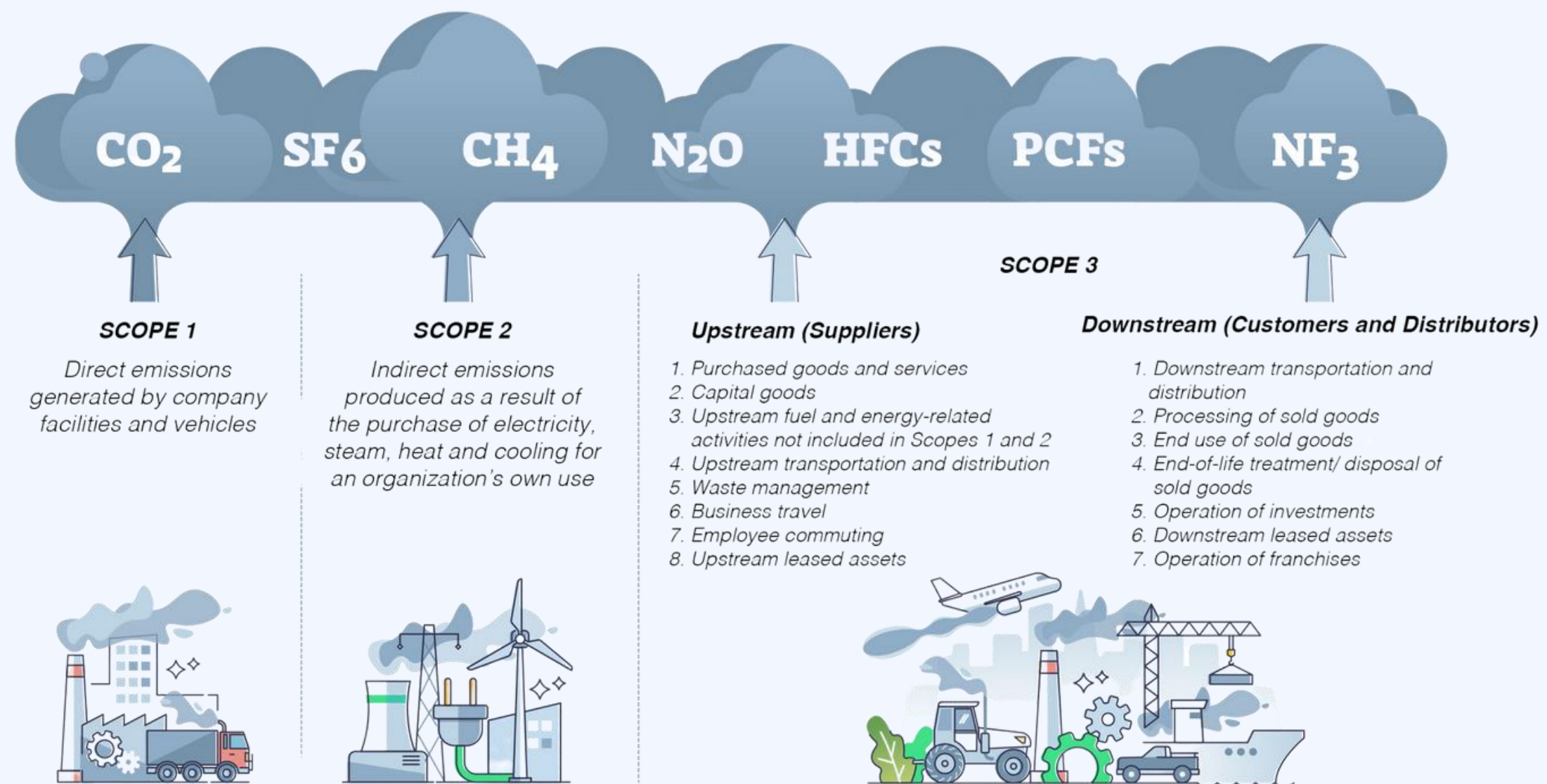


Prepared in accordance with the Greenhouse Gas Protocol's Corporate Accounting and Reporting Standard (2004) and the Corporate Value Chain Accounting and Reporting Standard (2011), this report ensures transparency and accuracy. Wherever possible, primary data has been used, particularly for major emissions sources. In instances where primary data was unavailable, consistent and conservative calculation methods were employed.

This report serves as the foundation for CurRx Health's commitment to tracking and understanding its environmental impact, laying the groundwork for more informed decisions and future sustainability efforts. The reporting period covered is from 1 April 2023 to 31 March 2024. Future iterations of this report will cover the same time frame, unless communicated otherwise at the time of publication.

This report does not include specific targets or details on greenhouse gas removals.

 Additional details on the activities of CuRX Health Ltd can be found on the company website.

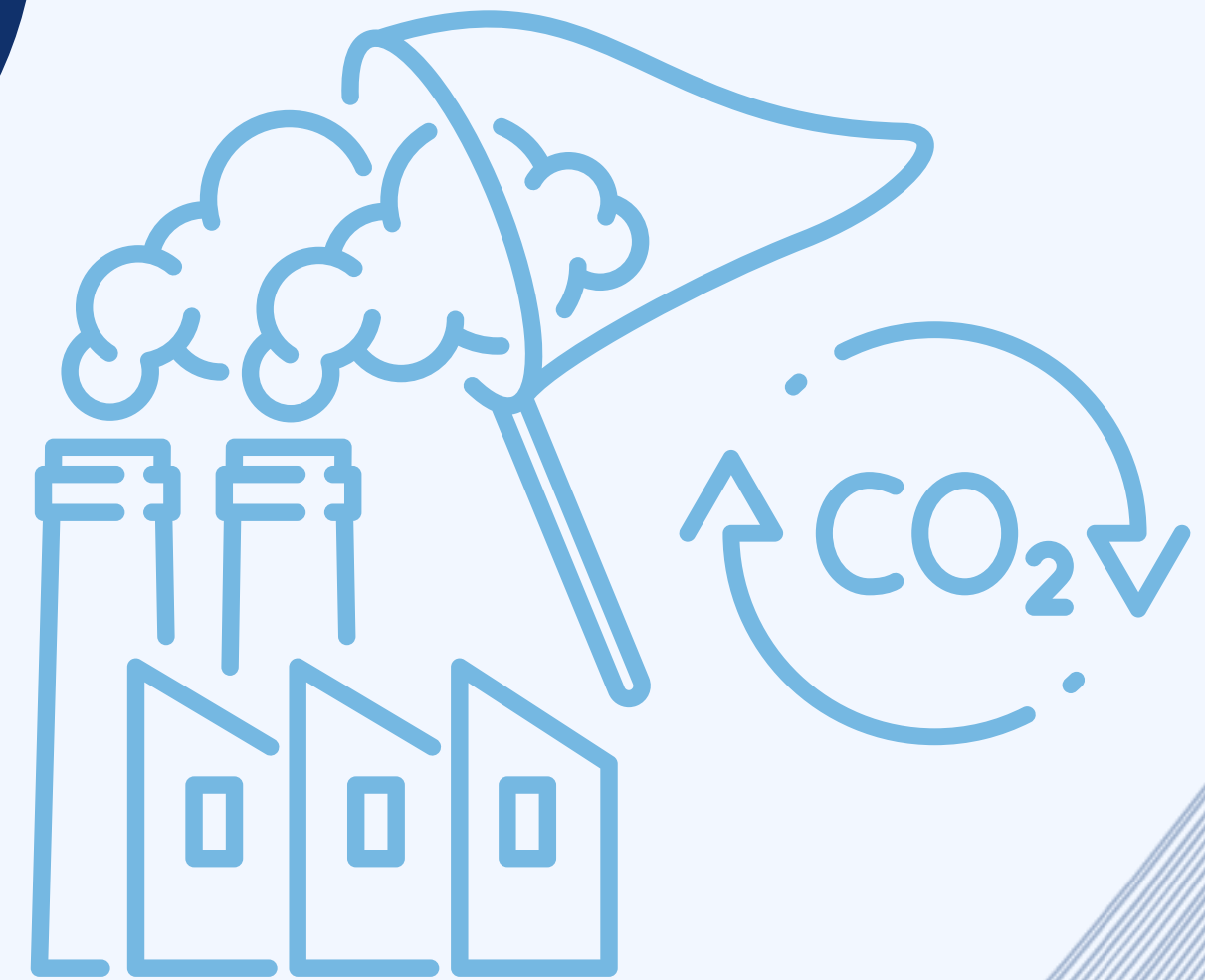




ORGANISATIONAL BOUNDARIES

The organisational boundaries were drawn using the consolidation based on operational control approach. This approach considers all emissions that the organisation has operational control over, but not necessarily financial control.

No allocation percentage is used in the calculation of the emissions share of each subunit.



REPORTING BOUNDARIES



In this report 11 different sources of carbon emissions are considered, grouped in 4 blocks:

ELECTRICITY

DIRECT

Direct emissions from operations that are owned or controlled by the reporting company.



Indirect emissions from the generation of purchased electricity, steam, heating, or cooling consumed by the reporting company.

DOWNSTREAM



Indirect emissions that occur in the value chain related to sold goods & services

UPSTREAM



Indirect emissions that occur in the value chain related to purchased goods & services.

This includes all relevant sources of greenhouse gas emissions. These were selected based on their relevance to the organisation's operations and/or their relative size in the total footprint.

DIRECT



DIRECT EMISSIONS FROM OPERATIONS THAT ARE OWNED OR CONTROLLED BY THE REPORTING COMPANY.



1-STATIONARY COMBUSTION

Emissions resulting from combustion of fuels in stationary sources.



Healthier Lives, Our Mission

ELECTRICITY



INDIRECT EMISSIONS FROM THE GENERATION OF PURCHASED ELECTRICITY, STEAM, HEATING, OR COOLING CONSUMED BY THE REPORTING COMPANY.



2-ELECTRICITY

Emissions resulting from the generation of electricity, purchased by the company.



Healthier Lives, Our Mission

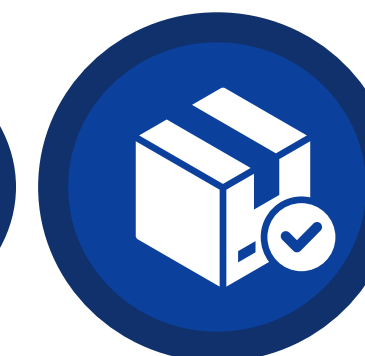
UPSTREAM

INDIRECT EMISSIONS THAT OCCUR IN THE VALUE CHAIN RELATED TO PURCHASED GOODS & SERVICES.



3-GOODS & SERVICES

Embedded emissions in purchased goods and services.

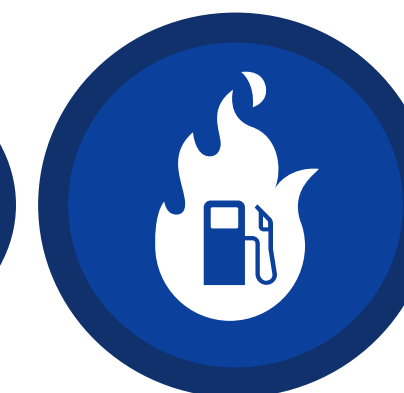


4-CAPITAL GOODS

Embedded emissions in capital goods like buildings, cars, ICT and machinery.

5-ENERGY SUPPLY

Embedded emissions in the purchase of fuels and energy in other activity categories.



6-TRANSPORT UPSTREAM

Emissions related to the transport of goods upstream of the production process or any transport purchased by the company.

UPSTREAM

INDIRECT EMISSIONS THAT OCCUR IN THE VALUE CHAIN RELATED TO PURCHASED GOODS & SERVICES.



7-WASTE

Emissions related to the disposal and processing of waste generated in operations.



8-BUSINESS TRAVEL

Emissions related to transportation of employees for business-related activities.

9-COMMUTING

Emissions related to commutes of employees in vehicles not under control of the company.



Healthier Lives, Our Mission

DOWNSTREAM



INDIRECT EMISSIONS THAT OCCUR IN THE VALUE CHAIN
RELATED TO SOLD GOODS & SERVICES



10-TRANSPORT DOWNSTREAM

Emissions related to the transport of goods downstream of the production process not paid for by the company.



Healthier Lives, Our Mission



EXCLUDED EMISSION CATEGORIES

The following emission categories are excluded from this report, as they are identified as not applicable or insignificant for the current reporting objectives:

- Mobile Combustion
- Process Emissions
- Fugitive Emissions
- Purchased Steam Heat Cooling
- Upstream Leased Assets
- Processing Of Sold Products
- Use Of Sold Products
- End Of Life of Sold Products
- Downstream Leased Assets
- Franchises
- Investments



QUANTIFIED GHG INVENTORY

04

In the reporting period Y-2023 the total emissions for the reporting organisation add up to 49 tCO₂e

The greenhouse gas emissions are expressed as tonnes of CO₂-equivalent.

METHODOLOGIES FOR THE COLLECTION AND QUANTIFICATION OF DATA

The emissions summary reflects the consolidation of emissions data according to the Greenhouse Gas Protocol reporting standards. These being the Corporate Accounting and Reporting Standard (2004) and the Corporate Value Chain Accounting and Reporting Standard (2011).

Carbon offsets are not reported in this report, nor have they been subtracted from the total.

REPORTED GHG AND GWP

The following greenhouse gases are included in the analysis: carbon dioxide (CO₂), methane (CH₄), nitrous oxide (N₂O), sulphur hexafluoride (SF₆), nitrogen trifluoride (NF₃), hydrofluorocarbons (HFCs) and perfluorocarbons (PFCs).

Emissions from these greenhouse gases are expressed in CO₂-equivalent (CO₂e) based on their global warming potential over a time horizon of 100 years (GWP100). The Greenhouse Warming Potential (GWP) values are based on the Intergovernmental Panel on Climate Change (IPCC) Fourth, Fifth or Sixth Assessment Report (AR4, AR5 or AR6), in accordance with the methodological choices of the emission factor publishers used in this report.

The emission factors for aviation were extended to include the additional effects of radiative forcing through the emission of gases and aerosols and changing cloud abundance. For this a central estimate for a multiplier to the GWP100 figure is used. This estimate tries to reflect the additional effect based on the best available scientific evidence, while being consistent with UNFCCC reporting convention. The total emissions in this report include electricity emissions using the market-based method. Travel emissions in this report include the effects of radiative forcing for aviation.



APPROACH TO EMISSION FACTORS



For each activity the most relevant and localised emission factor possible has been selected, at the discretion of the reporter. Apart from locality and relevancy, other considerations were the availability of emission factors and consistency in the selection of emission factor publications throughout the document.

A full list of emission factor publications used in this report can be found in the table below:

Publisher	Publication Version	Publication Date	URL
Exiobase	3.8.2	21/10/2021	link
UK.gov	v2023 1.0	15/05/2023	link
Association of Issuing Bodies	2022 v1.0	26/05/2023	link

Each emission factor used in the calculation has an assigned validity period overlapping or partially overlapping with the application period of the reported activity. The validity period of emission factors is determined by its publication document[1].

[1] In case the application period of the activity overlaps with the validity period of more than one emission factor, the median data of the activity period is used to determine which factor to use. (example if an activity stretches from August 2021 to July 2022, the median date is 29/01/2022)



APPROACH TO BASE YEAR REPORTING

The reporting period Y-2023 is the first GHG reporting period for CuRX Health Ltd and counts as the base year for the current and future reporting cycles.

UNCERTAINTY ASSESSMENT



For this report a qualitative assessment of uncertainty has been applied. Seen that the effectiveness of a quantitative assessment would be limited due to a general lack of accurate uncertainty data. The applicability of these quantitative assessments will be reviewed in each subsequent reporting period.

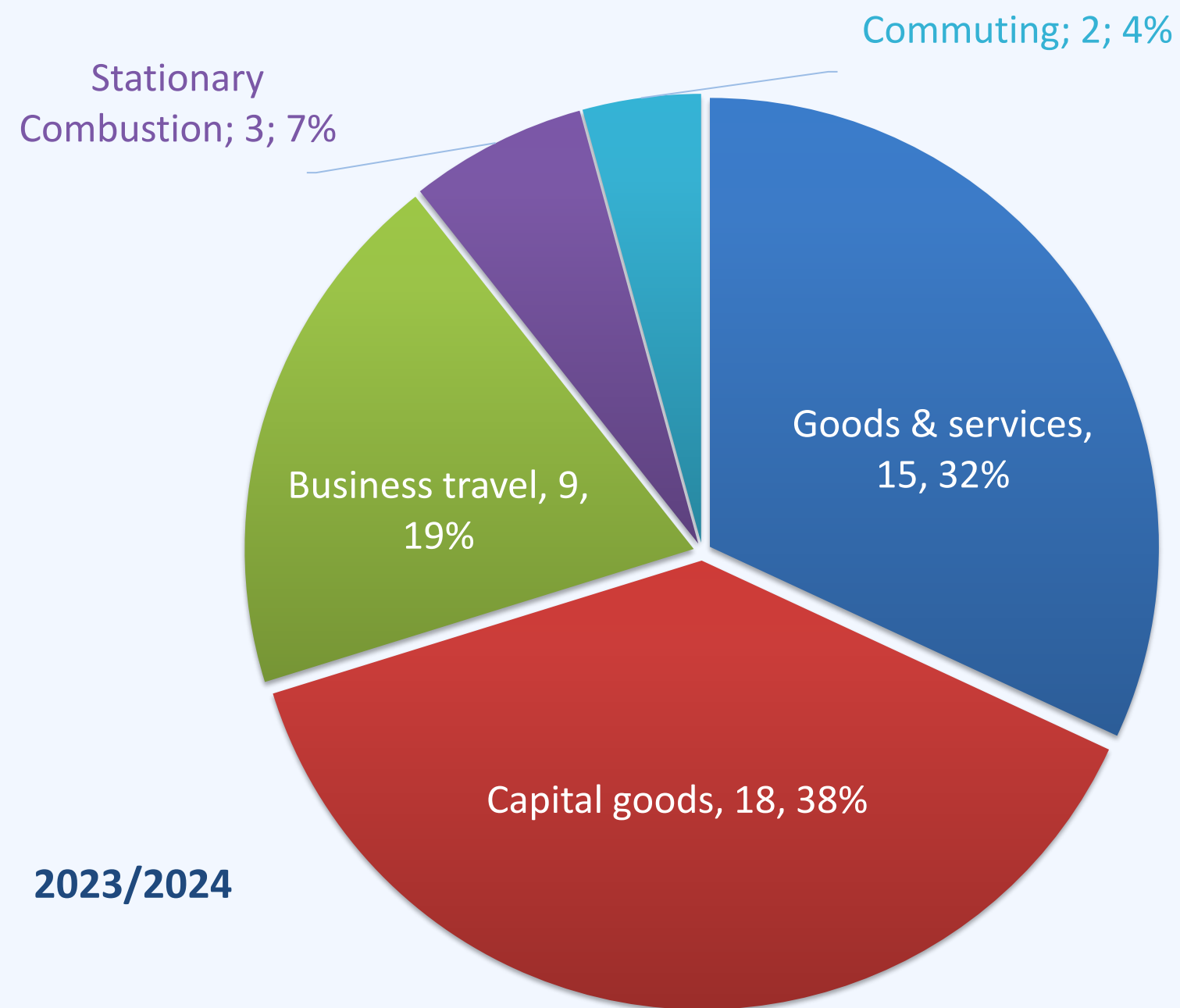
In assessing the uncertainty associated with our carbon footprint calculations, we considered various activity groups, each contributing differently to the overall emissions profile. The uncertainty values are presented with a 95% confidence interval, indicating the potential variability in our emissions estimates.

Activity Group	Emissions (tCO ₂ e)	Uncertainty	Share of total emissions
Activity Group	Emissions (tCO ₂ e)	Uncertainty (95% confidence)	Share of total emissions
Stationary Combustion	3.22	-5% to +5%	6.6%
Electricity	0.15	-20% to +24%	0.3%
Goods & Services	15.41	-32% to +46%	31.4%
Capital Goods	18.36	-57% to +134%	37.4%
Energy Supply	0.59	-5% to +5%	1.2%
Transport Upstream	0.07	-30% to +42%	0.1%
Waste	0.02	-36% to +57%	0.0%
Business Travel	8.97	-28% to +39%	18.3%
Commuting	2.33	-32% to +47%	4.7%



2023 CARBON EMISSIONS

Our carbon footprint at CurRx Health Ltd totals 49 tonnes of CO₂e, offering a clear view of where our emissions originate and highlighting areas for future improvement. This footprint is broken down into three key categories: Scope 1, Scope 2, and Scope 3 emissions, each revealing different aspects of our operational impact.



2023/2024



Healthier Lives, Our Mission



2023 CARBON EMISSIONS

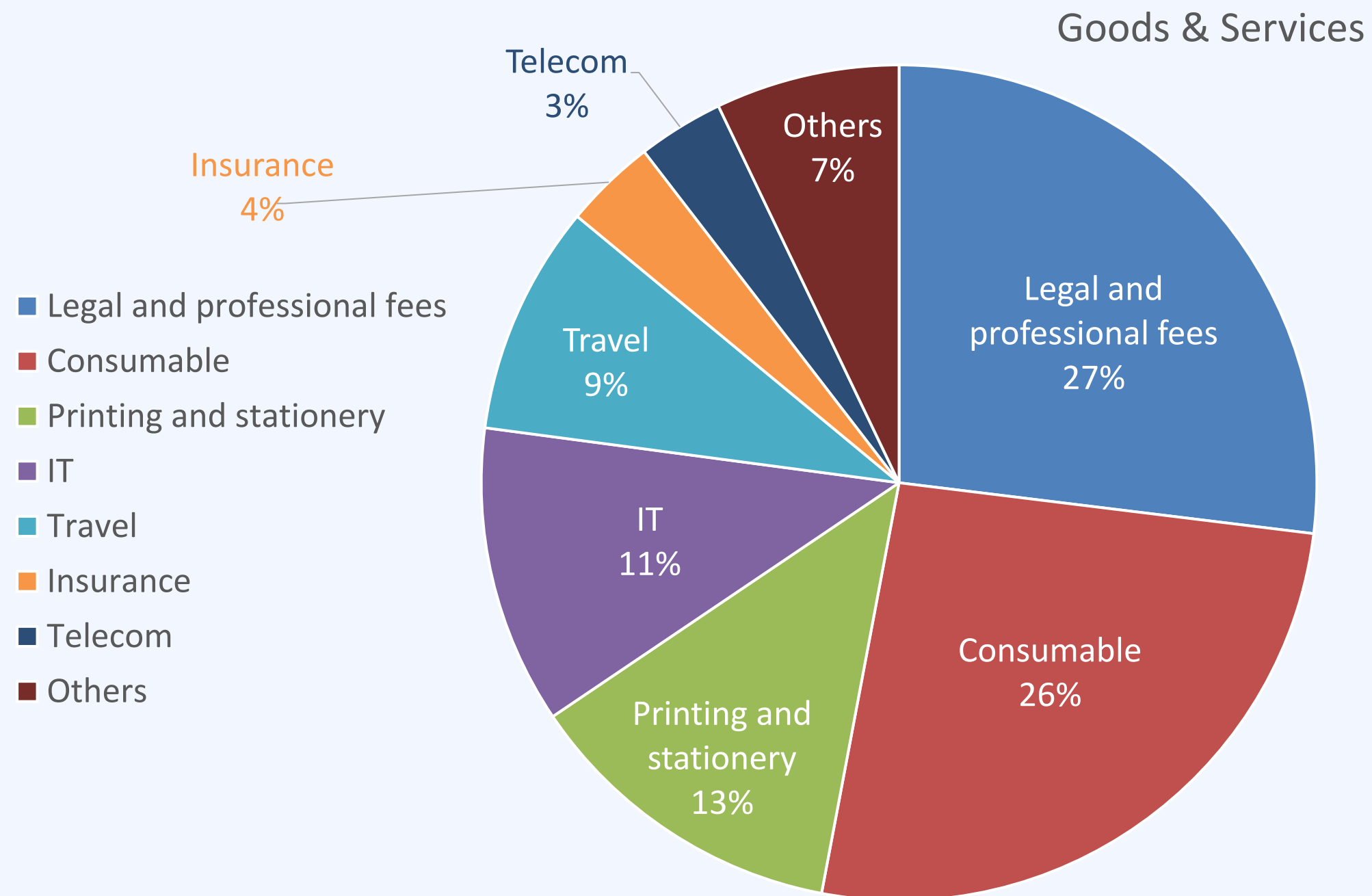
Starting with Scope 1 and 2, we generate 3 tCO₂e in our Scope 1, accounting for 6% of our total carbon footprint. Our Scope 2 emissions contributing less than 1 tCO₂e, under 2% of our total footprint.

The largest share of our emissions, 94%, comes from Scope 3, which includes all indirect emissions related to our supply chain and operational activities. A significant portion of this comes from the goods and services we purchase, which alone contribute 31% of our total emissions.

Our capital goods, which represent 38% of our total footprint, are the largest single contributor. These emissions arise from the manufacture and delivery of the long-term assets we use.

Business travel is another major contributor, making up 18% of our footprint. This reflects the emissions from transportation for meetings, site visits, and other professional travel.

Smaller yet still notable contributors include employee commuting, at 4%, and emissions related to fuel- and energy-related activities, which add another 2%.



Finally, both transportation and waste generation contribute less than 1% each to our overall emissions.



Breakdown the emission



Healthier Lives, Our Mission

Emission Category	Scope	All GHG (tCO2e)
Scope 1		3
Stationary Combustion	Scope 1	3
Scope 2		<1
Electricity - market based	Scope 2	<1
Electricity - location based	Scope 2	<1
Scope 3 -		46
Purchased goods and services	Scope 3	15
Capital goods	Scope 3	18
Fuel- and energy	Scope 3	1
Upstream transportation	Scope 3	<1
Waste generated in operations	Scope 3	<1
Business travel	Scope 3	9
Employee commuting	Scope 3	2
Downstream transportation	Scope 3	-
Total		49



into carbon dioxide (CO₂), methane (CH₄), nitrous oxide (N₂O), sulphur hexafluoride (SF₆), nitrogen trifluoride (NF₃), hydrofluorocarbons (HFCs), and perfluorocarbons (PFCs).

Emission Category	Stationary Combustion	Goods and services	Capital goods	Transportation	Business travel	Commuting
CO2	3	11	15	<1	9	2
CH4	<1	3	2	<1	<1	<1
N2O	<1	1	<1	<1	<1	<1
SF6	-	<1	<1	-	-	-
NF3	-	-	-	-	-	-
HFCs	-	<1	<1	-	-	-
PFCs	-	<1	<1	-	-	-
CO2e*	-	<1	-	-	-	-



Healthier Lives, Our Mission



MORE ABOUT
CRRUX



EMAIL

support@currx.com

PHONE

0161 297 0670

WEBSITE

currx.com