



# CARBON REDUCTION PLAN

Publication date 1/3/2025

Commitment to achieving Net Zero by 2045.  
This Carbon Reduction Commitment and Plan is available on our website.

Prepared By



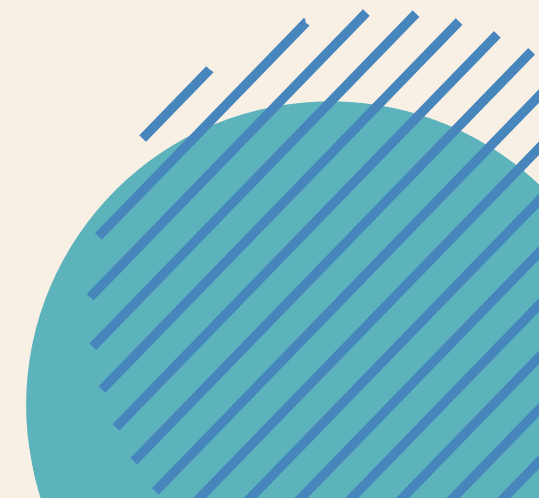
2025



# BASELINE EMISSIONS FOOTPRINT

Baseline emissions are a record of the greenhouse gases that have been produced in the past and were produced prior to the introduction of any strategies to reduce emissions. Baseline emissions serve as the reference point against which emissions reduction can be measured. However, since this is our first year of calculation, our baseline and current year emissions are identical.

The reporting period for Y23/24 marks the first GHG reporting period for the company and serves as the base year for current reporting cycles. However, as the company is still in its startup phase and not yet fully operational, we anticipate reassessing the base year once the company reaches full operational capacity within the next 2-3 years. In the meantime, to ensure we maintain focus on our environmental impact, we will use this year as a baseline until a new baseline can be calculated.





Baseline Year: 01/05/2023 - 31/04/2024																	
EMISSIONS	TOTAL (tCO <sub>2</sub> e)																
Scope 1	0																
Scope 2	Location Base: 0                      Market Base: 0																
Scope 3 (Included Sources)	<table border="1"><tbody><tr><td>Goods &amp; Services</td><td>25.23</td></tr><tr><td>Transport Upstream</td><td>0.12</td></tr><tr><td>Waste</td><td>0.02</td></tr><tr><td>Business Travel</td><td>23.98</td></tr><tr><td>Capital Goods</td><td>0.82</td></tr><tr><td>Transport Downstream</td><td>0.07</td></tr><tr><td>Use of Product</td><td>34.55</td></tr><tr><td>End-of-life of Product</td><td>0.01</td></tr></tbody></table>	Goods & Services	25.23	Transport Upstream	0.12	Waste	0.02	Business Travel	23.98	Capital Goods	0.82	Transport Downstream	0.07	Use of Product	34.55	End-of-life of Product	0.01
Goods & Services	25.23																
Transport Upstream	0.12																
Waste	0.02																
Business Travel	23.98																
Capital Goods	0.82																
Transport Downstream	0.07																
Use of Product	34.55																
End-of-life of Product	0.01																
<b>Total Emissions</b>	<b>84.8</b>																



# Current Emissions Reporting

<b>Current Year: 01/05/2023 - 31/04/2024</b>																	
<b>Baseline Year: 01/05/2023 - 31/04/2024</b>																	
<b>EMISSIONS</b>	<b>TOTAL (tCO<sub>2</sub>e)</b>																
Scope 1	0																
Scope 2	Location Base: 0                      Market Base: 0																
Scope 3 (Included Sources)	<table border="1"> <tr> <td>Goods &amp; Services</td> <td>25.23</td> </tr> <tr> <td>Transport Upstream</td> <td>0.12</td> </tr> <tr> <td>Waste</td> <td>0.02</td> </tr> <tr> <td>Business Travel</td> <td>23.98</td> </tr> <tr> <td>Capital Goods</td> <td>0.82</td> </tr> <tr> <td>Transport Downstream</td> <td>0.07</td> </tr> <tr> <td>Use of Product</td> <td>34.55</td> </tr> <tr> <td>End-of-life of Product</td> <td>0.01</td> </tr> </table>	Goods & Services	25.23	Transport Upstream	0.12	Waste	0.02	Business Travel	23.98	Capital Goods	0.82	Transport Downstream	0.07	Use of Product	34.55	End-of-life of Product	0.01
Goods & Services	25.23																
Transport Upstream	0.12																
Waste	0.02																
Business Travel	23.98																
Capital Goods	0.82																
Transport Downstream	0.07																
Use of Product	34.55																
End-of-life of Product	0.01																
<b>Total Emissions</b>	<b>84.8</b>																

# EMISSIONS REDUCTION TARGETS

To achieve Net Zero, and in line with the Science Based Targets initiative SBTi, we have adopted the following carbon reduction targets:

Our Scope 1& 2 emissions are zero as we don't have offices.

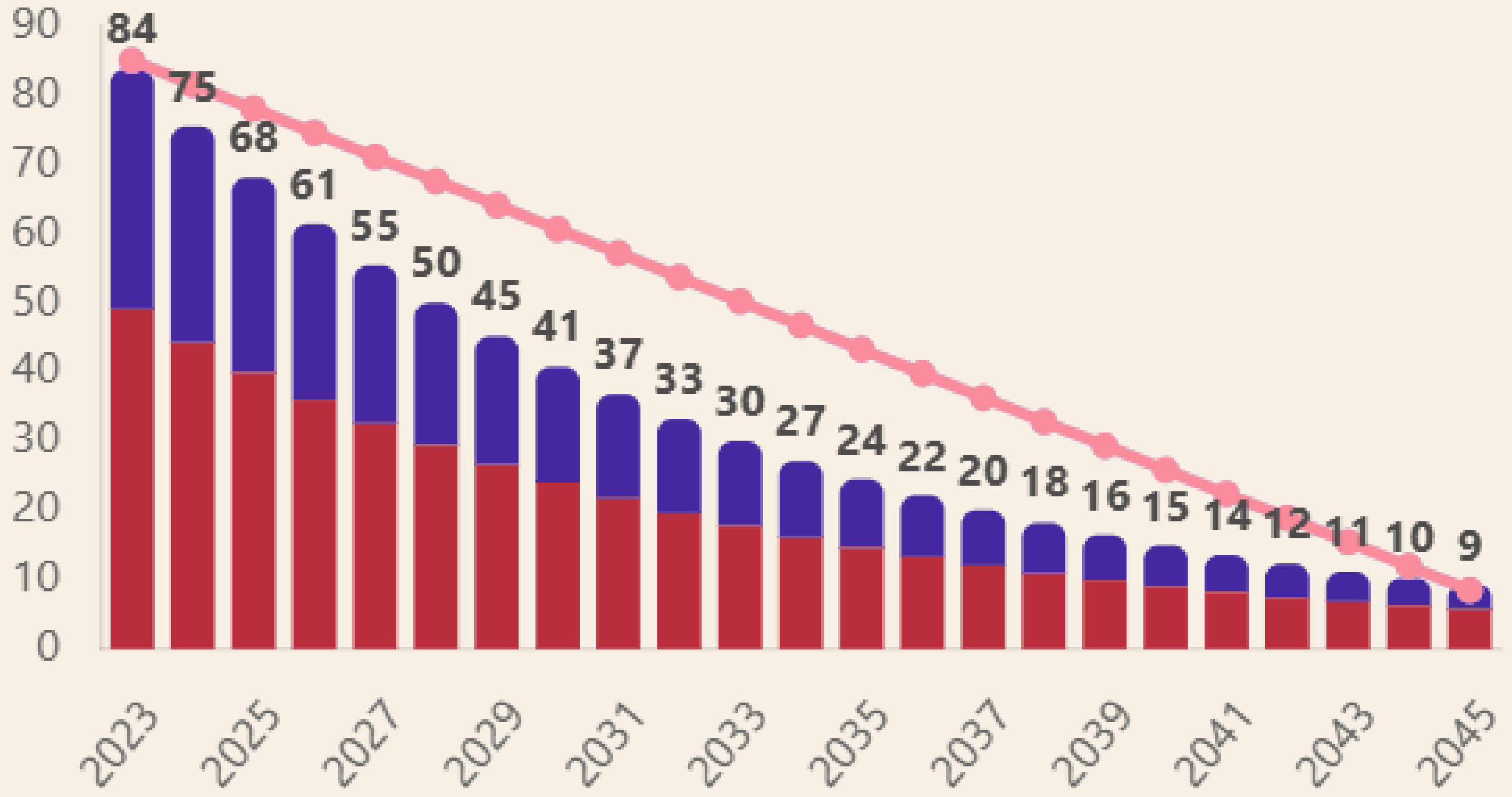
We are committing to reduce our Scope 3 emissions by at least 30% by 2030 and 90% by 2045.

# CARBON REDUCTION PROJECTS

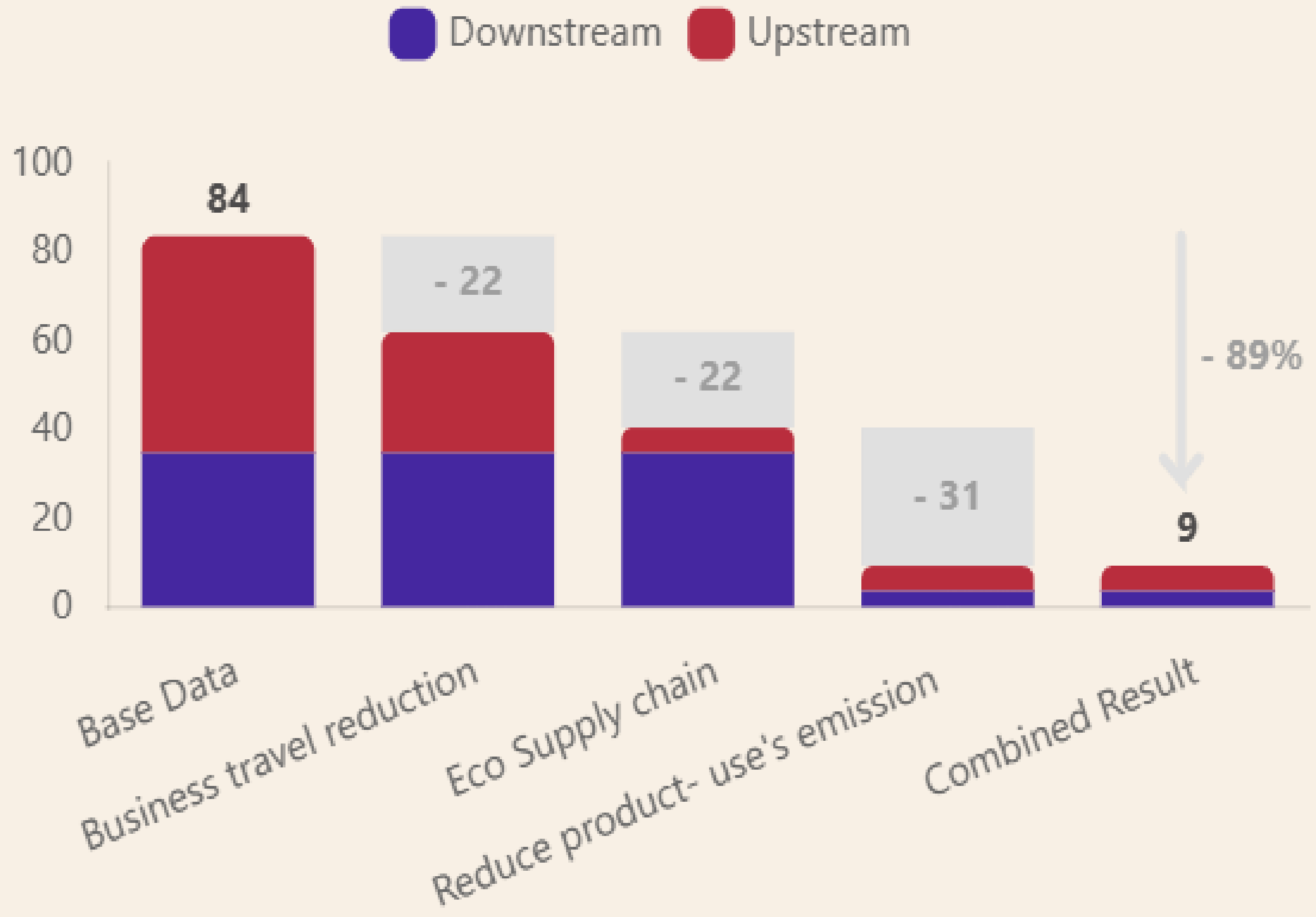
We are committed to monitoring our carbon emissions and conducting annual carbon footprint calculations covering all three scopes. This commitment will be effective throughout the duration of the contract.

1. Achieve a 90% reduction in emissions from purchased goods and services by 2045 by collaborating with suppliers to gather activity-based data, transitioning from spend-based analyses to actual CO<sub>2</sub>e reductions.
2. Reduce emissions from business travel by 90% by 2045.
3. Reduce emissions from Use of the products by 90% by 2045.

Target Total Target Scope 3 Upstream Downstream



This is to show the impact each of the measures will have on our emissions:



# DECLARATION AND SIGN OFF



This Carbon Reduction Plan has been completed in accordance with PPN 06/21 and associated guidance and reporting standard for Carbon Reduction Plans.

Emissions have been reported and recorded in accordance with the published reporting standard for Carbon Reduction Plans and the GHG Reporting Protocol corporate standard[1]and uses the appropriate Government emission conversion factors for greenhouse gas company reporting[2].

Scope 1 and Scope 2 emissions have been reported in accordance with SECR requirements, and the required subset of Scope 3 emissions have been reported in accordance with the published reporting standard for Carbon Reduction Plans and the Corporate Value Chain (Scope 3) Standard[3].

This Carbon Reduction Plan has been reviewed and signed off by the board of directors (or equivalent management body).  
Signed on behalf of the Supplier:

Date: 1/3/2025

